

# CORPORATE SOLUTIONS 4.05.00

## RELEASE NOTES

### CONTENTS

<b>1. Centralized Administration: AdminSecure</b> .....	<b>1</b>
<b>1.1. New features of the version</b> .....	<b>1</b>
1.1.1. Scheduling of scan jobs on a maximum number of computers.....	1
1.1.2. Inclusion of platforms in the report filter .....	1
1.1.3. More automatic uninstallers in AdminSecure .....	2
1.1.4. Technological adaptation .....	2
<b>1.2. Bugs corrected</b> .....	<b>2</b>
<b>2. Panda for Desktops (2000/XP/Vista/Win7)</b> .....	<b>3</b>
<b>2.1. New features of the version</b> .....	<b>3</b>
2.1.1. Technological adaptation .....	3
<b>2.2. Bugs corrected</b> .....	<b>3</b>
<b>3. Panda for File Servers (2000/2003/2008)</b> .....	<b>4</b>
<b>3.1. New features of the version</b> .....	<b>4</b>
3.1.1. Technological adaptation .....	4
<b>3.2. Bugs corrected</b> .....	<b>4</b>
<b>4. Panda for Exchange (2007 and 2000/2003)</b> .....	<b>4</b>
<b>4.1. New features of the version</b> .....	<b>4</b>
4.1.1. Update of the anti-spam engine in the Exchange protection.....	4
4.1.2. Technological adaptation .....	4
<b>4.2. Bugs corrected</b> .....	<b>4</b>
<b>5. Panda For Linux</b> .....	<b>5</b>
<b>5.1. New features of the version</b> .....	<b>5</b>
5.1.1. Technological adaptation .....	5
<b>6. Panda For Linux Servers</b> .....	<b>5</b>
<b>6.1. New features of the version</b> .....	<b>5</b>
6.1.1. Technological adaptation .....	5
<b>7. CVPSecure and ProxySecure</b> .....	<b>5</b>
<b>8. ANNEX I: Version table</b> .....	<b>6</b>

# 1. CENTRALIZED ADMINISTRATION: ADMINSECURE

## 1.1. New features of the version

### 1.1.1. Scheduling of scan jobs on a maximum number of computers

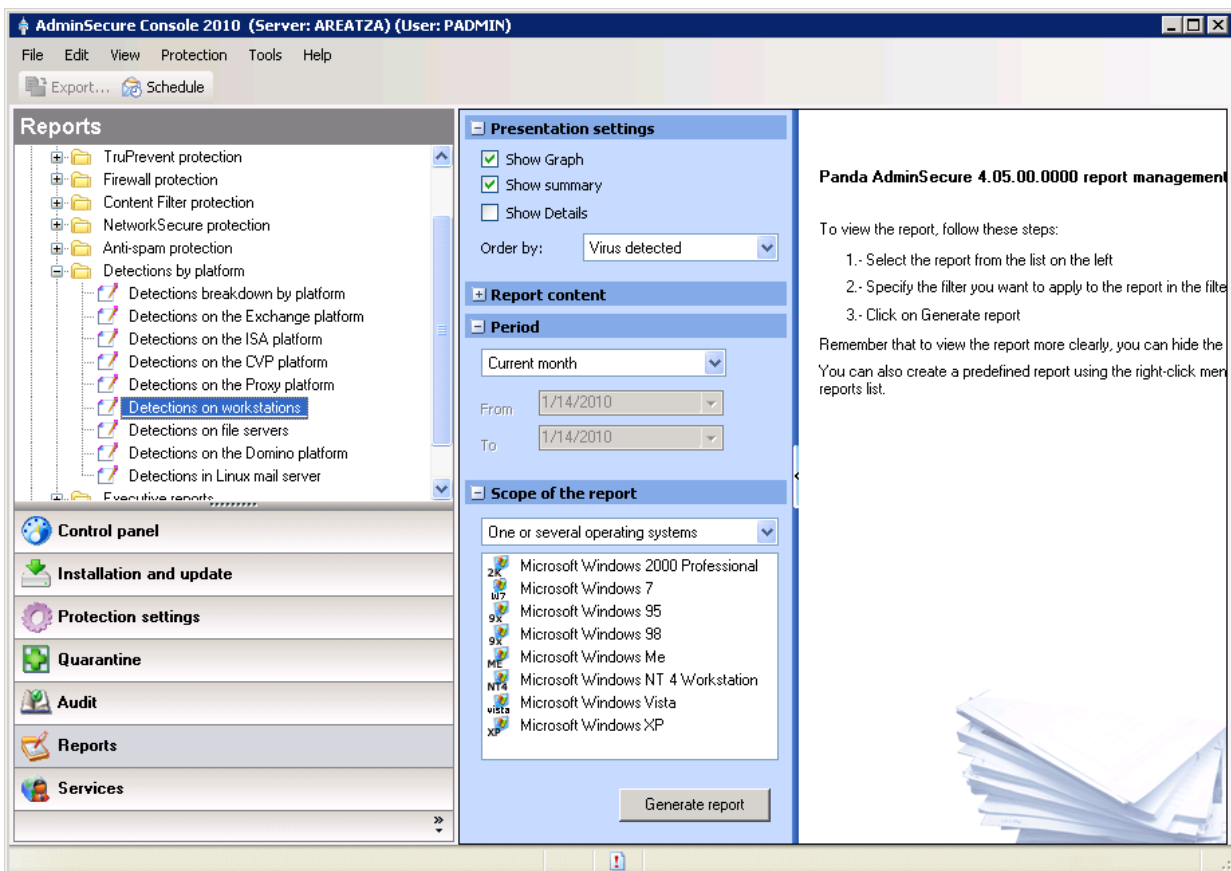
In previous versions, in order to minimize interference on networks with reduced capacity, the maximum number of computers on which a scheduled scan job could be run was three. On the other computers the job was launched randomly between the time scheduled by the user and 00:00h the following day.

From this version on, administrators can configure the number of computers on which they want to simultaneously run the scan at the scheduled time. This allows each user to select the number of computers in accordance with the characteristics of the network. The number of computers to be scanned at the scheduled time can be configured by means of a registry entry (ProgramedScanTasksToLaunch). The default value is 50, and the value must always be a whole number greater than 0.

### 1.1.2. Inclusion of platforms in the report filter

In previous versions a problem was detected in the module that extracts reports by platform. When trying to generate a report filtering by Windows Vista, Windows 2008 or Exchange 2007, these operating systems were not displayed in the console. Users could therefore not obtain data from these platforms.

In this version, in addition to adding these platforms in the console, other new platforms such as Windows 7 and Windows Server 2008 R2 have been added to allow administrators to generate the corresponding reports.



### 1.1.3. More automatic uninstallers in AdminSecure

This version automatically uninstalls a larger number of antivirus programs. This simplifies the protection uninstallation-installation processes.

Thanks to the automatic uninstallers, administrators do not need to manually uninstall the antivirus programs installed on the network. They are automatically uninstalled when Panda for Desktops or Panda for File Servers are installed.

These are the new products that are automatically uninstalled:

ANTIVIRUS PROGRAMS
Symantec EndPoint Protection 11.0. 4000.2295
Symantec Antivirus 10.1.8.8000

### 1.1.4. Technological adaptation

- ✓ **From this version, AdminSecure no longer supports:**
  - Windows 9x, Windows NT

## 1.2. Bugs corrected

- Under certain circumstances, on incrementally updating protection through the console, error 850 occurred.
- On Windows 2008 computers with AdminSecure operating as domain controller, the enabling of user profiles through the console would sometimes fail.
- On operating systems in languages with non-Latin characters (such as Greek), when trying to create more than three scheduled scans through the console, error 630 would be returned (Error programming the Scheduler).
- On computers with Windows Vista with the protection installed, an error would occasionally appear informing that the pavupg.exe process had been aborted due to a buffer overflow.
- Under exceptional circumstances, when the protection was updated, pavupg.exe error 2102 appeared in the console.
- There was an error on systems with replicated repositories, causing replication to fail once a week.
- Problems occurred during the mass sending of settings modifications.
- Problems occurred on running scan tasks when the AdminServer was blocked.
- When running the Agent Distribution Wizard through the console, an error occurred if a computer with a dash (-) in the name was specified.
- The 'Repository structure' report in the Specific Reports → Status folder duplicated the repositories
- On trying to modify a scheduled scan task, the console indicated that the task could not be correctly saved.
- Sending of scheduled reports caused an error in Windows 2008 server domain controller.

- A problem with the shield caused an error when installing the agent.
- The "Update and connection status" and "Signature file updates" reports did not reflect the data of the products installed, or the real status of the signature files.
- Installation of the AdminSecure upgrade caused an error which indicated that the PandaSiteProxy.dll was being used by another process.

## 2. PANDA FOR DESKTOPS (2000/XP/VISTA/WIN7)

### 2.1. New features of the version

#### 2.1.1. Technological adaptation

- ✓ **Panda for Desktops** can be deployed from this version onwards to computers with:
  - Windows 7
- ✓ From this version on, **Panda for Desktops** will be identified by the Windows Security Center on Windows Vista SP1. This way, computers with this protection installed will be displayed as secure.

### 2.2. Bugs corrected

- When launching a scan on a 4 terabyte disk, no file was found on the disk, neither when scanning from the root, nor from a folder.
- Problems detected after installation of the agent have been corrected.
- Under certain conditions, the file permanent protection ceased to be available.
- An error occurred when trying to send a file by email (selecting the file and sending it via the corresponding option from the right-click menu).
- Outlook blocked when attaching files from Microsoft Explorer.
- On creating an application rule, this would only be applied after the second attempt.
- Resolution of problems regarding false warnings of IP /TCP/UDP intrusion packets with inconsistent data headers.
- With the protection installed, problems occurred executing the application "Media Monitor Player"
- When starting computers with Windows Vista SP2 there were problems using the Internet and receiving email.
- Cookies could not be deleted from Terminal Server.
- In computers with Windows 2000, when files were copied to a network drive (NAS) the system restarted.  
It was not possible to delete all items from quarantine. For this reason, after updating the products, obsolete traces were left from previous quarantines.

## **3. PANDA FOR FILE SERVERS (2000/2003/2008)**

### **3.1. New features of the version**

#### 3.1.1. Technological adaptation

- ✓ **Panda for File Servers now supports:**
  - **Windows server 2008 R2**

### **3.2. Bugs corrected**

- Problems detected after installation of the agent have been corrected.
- When launching a scan on a 4 terabyte disk, no file was found on the disk, neither when scanning from the root, nor from a folder.
- Under certain conditions, the file permanent protection ceased to be available.
- Cookies could not be deleted from Terminal Server.
- When the AV service was running, the Exchange 2003 pop3 connector could not get messages.
- In computers with Windows 2000, when files were copied to a network drive (NAS) the system restarted.
- It was not possible to delete all items from quarantine. For this reason, after updating the products, obsolete traces were left from previous quarantines.

## **4. PANDA FOR EXCHANGE (2007 AND 2000/2003)**

### **4.1. New features of the version**

#### 4.1.1. Update of the anti-spam engine in the Exchange protection.

In this version, a new version of the anti-spam engine is integrated in the Exchange protection, offering detection ratios of **99.06%** and a false positive ratio of **0.003%**.

Improvements with respect to the previous version are applied above all to incident resolution and performance improvement.

#### 4.1.2. Technological adaptation

- ✓ **Panda for Exchange now supports:**
  - Exchange 2007 SP2

### **4.2. Bugs corrected**

- Timeouts in Exchange 2007/2003/2000 when processing HTML files have been corrected.

## 5. PANDA FOR LINUX

### 5.1. New features of the version

#### 5.1.1. Technological adaptation

- ✓ **Panda for Linux now supports**
  - Debian 5.0
  - Ubuntu 9.10
  - OpenSuse 11.2

## 6. PANDA FOR LINUX SERVERS

### 6.1. New features of the version

#### 6.1.1. Technological adaptation

- ✓ **Panda for Linux Servers** es compatible a partir de esta versión con:
  - Debian 5.0
  - Ubuntu 9.10
  - OpenSuse 11.2

## 7. CVPSECURE AND PROXYSECURE

From this version there will no longer be support for **CVPSecure** and **ProxySecure**. For more information, refer to the life-cycle policy posted on the corporate website:

<http://www.pandasecurity.com/spain/enterprise/support/lifecycle/>

## 8. ANNEX I: Version table

<b>MODULE</b>	<b>VERSION</b>
<b>AdminSecure</b>	4.05.00
<b>Panda for Desktops (2000/XP/Vista/Win7)</b>	4.05.15
<b>Panda for File Servers (2000/2003/2008)</b>	8.05.15
<b>Panda for Exchange Servers (2007)</b>	4.20.11
<b>Panda for Exchange Servers (2000/2003)</b>	3.20.05
<b>Panda for ISA Servers</b>	2.12.05
<b>Panda for Domino Servers</b>	2.41.05
<b>Panda Commandline (Windows)</b>	9.5.1.1
<b>Panda Commandline (Linux)</b>	9.4.3.22